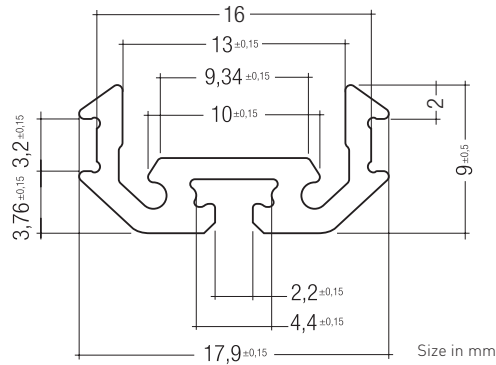
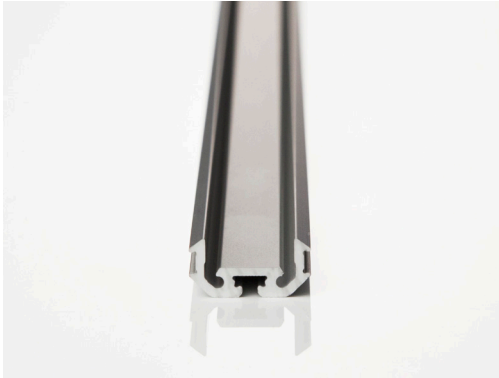




PROFILE | Z200-2

## PROFILE | Z200-2



### TECHNICAL DATA

Dimensions LxWxH	2,000 <sup>1</sup> x 18 x 9 mm
Weight	0.322 kg
Coefficient of linear expansion	23 * 10 <sup>-6</sup> / K

<sup>1</sup>Tolerance length: ± 1 mm

RoHS

### PRODUCT DESCRIPTION

- Aluminium mounting plate for LED modules up to a width of 12 mm
- Use in combination with different lenses is possible
- Aluminium, anodised natural
- Flexible and easy to install
- Mounting unit for plastic cover
- Compact cross-section (9 x 18 mm)
- Can be expanded with extensive accessories

### ORDERING DATA - PROFILE | Z200-2

Type	Art. Nr.
LED Z200-2 MOUNTING PROFILE AL - 2m	24166148

### PROPERTIES

#### Cooling properties

1 cm Z200-2 = 3 cm<sup>2</sup> surface

#### Recommended profile length in cm <sup>1</sup>

ta	P130-Module	P211-Module 350 mA	P211-Module 700 mA
25 °C	15	4	9
35 °C	20	5	12
45 °C	30	7	16
55 °C	-	11	29

<sup>1</sup> Data are valid for applications with cover and end caps and with sufficient air circulation (convection). Compliance with the max. permissible temperature of the LED modules at the tc point must be ensured in the thermally stable state.

<sup>2</sup> The operation of LED modules with this profile is not possible without additional cooling, e.g. mounting on another heat conductor (plate, profile, aluminium, etc.) and the use of thermally conductive paste.

#### Mounting example

