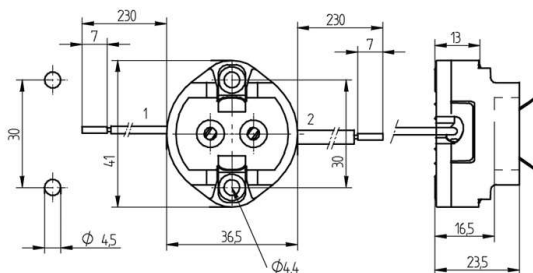


 Create pdf

## Lampholders for discharge lamps

25.701.1001

G12



pkg.	wt.	part no.
------	-----	----------

144	43 g	25.701.1001.00
-----	------	----------------

Connection: with cables attached

Wires: 1. Cu, nickel plated, 1.0 mm<sup>2</sup>, with ferrule, Insulation: PTFE 250° C, ø 2 mm, Cable length: 230 mm

2. Cu, tin plated, 1.0 mm<sup>2</sup>, with ferrule, Insulation silicone 180° C, ø 4.2 mm (ignition cable), Cable length: 230 mm


For Metal Halide lamps

Screw fixing

Housing: Ceramic / PPS

Contacts: CrNi

- Voltage overload capacity category III
- Please consult us if fixing at rear with M3 rivet.
- Suitable for light fittings of protection class II in accordance with EN 60598-1 2008.

T250	4 A 250 V	 4 kV/pulse
------	--------------	---

Document generated on: Th, 9. February 2017 - 17:12