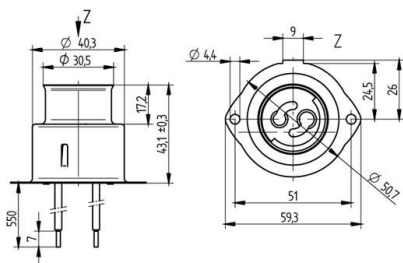


 Create pdf

## Lampholders for discharge lamps

25.703.2003

PGZ12



colour	pkg.	wt.	part no.
in	untreated 60	90 g	25.703.2003.10
status			

Wires: 2 ignition cables attached, Cu, nickel plated, 1.0 mm<sup>2</sup>, with ferrule, Insulation: PTFE (max. 250° C) double insulated, ø 3 mm, Free cable length: 550 mm


For discharge lamp CosmoPolis from Philips

Screw fixing

Housing: Ceramic / CrNi

- Suitable for light fittings of protection class II in accordance with EN 60598-1 2008.
- The method of wiring must be such that no stress or bending motions will be transferred to the contacts, thus reducing the contact / pressure on the lamp pins.
- Free movement of the spring loaded interior and cables must also be observed.



T250	3 A 250 V	 5 kW/pulse
------	--------------	---

Document generated on: Th, 9. February 2017 - 17:15