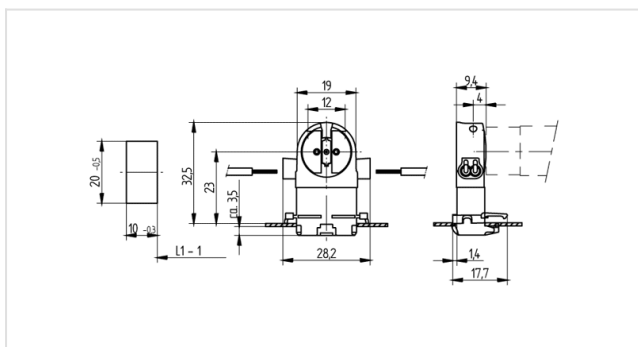




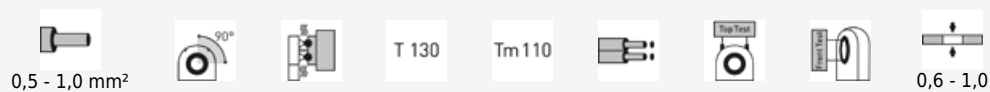
Technik für Licht
Komponenten · Optik · Automation

26.660.2003

Linear Fluorescent Lampholders: General Applications
G5 (T5): Push In Lampholders



Color: weiß
FC: 50
Part no.: 26.660.2003.50



Description

- With snap in foot and closed base IP 40
-
- A pair of lampholders provides a lamp length tolerance compensation of 2 mm

Product name:	Fluorescent lampholder G5
LED type:	G5
Farbe:	white
Mounting method 1:	Snap-in foot 10 x 20 mm
Material:	Housing: PC Rotor: PBT
Rotor:	with
cULus file no.:	E-92235
Weight:	4
Approval:	cULus
Front Test:	yes
Lamp center:	23
Material thickness:	0.6 - 1.0
Protection class according to IEC:	IP 40
T-Marking:	130
Top Test:	yes
Wiring:	Side entry wiring
Pkg.:	1000